



# Investor Presentation

Fall 2020



## Gold in Canada

- Company has 100% interest in the Shakespeare gold project in Ontario, Canada

## Deep Experience

- Management expertise in gold start ups
- Strong board with success in Canada

## Tightly-Held Structure

- Management and Strategic Investors own > 60

## Publicly Listed in North America and Europe

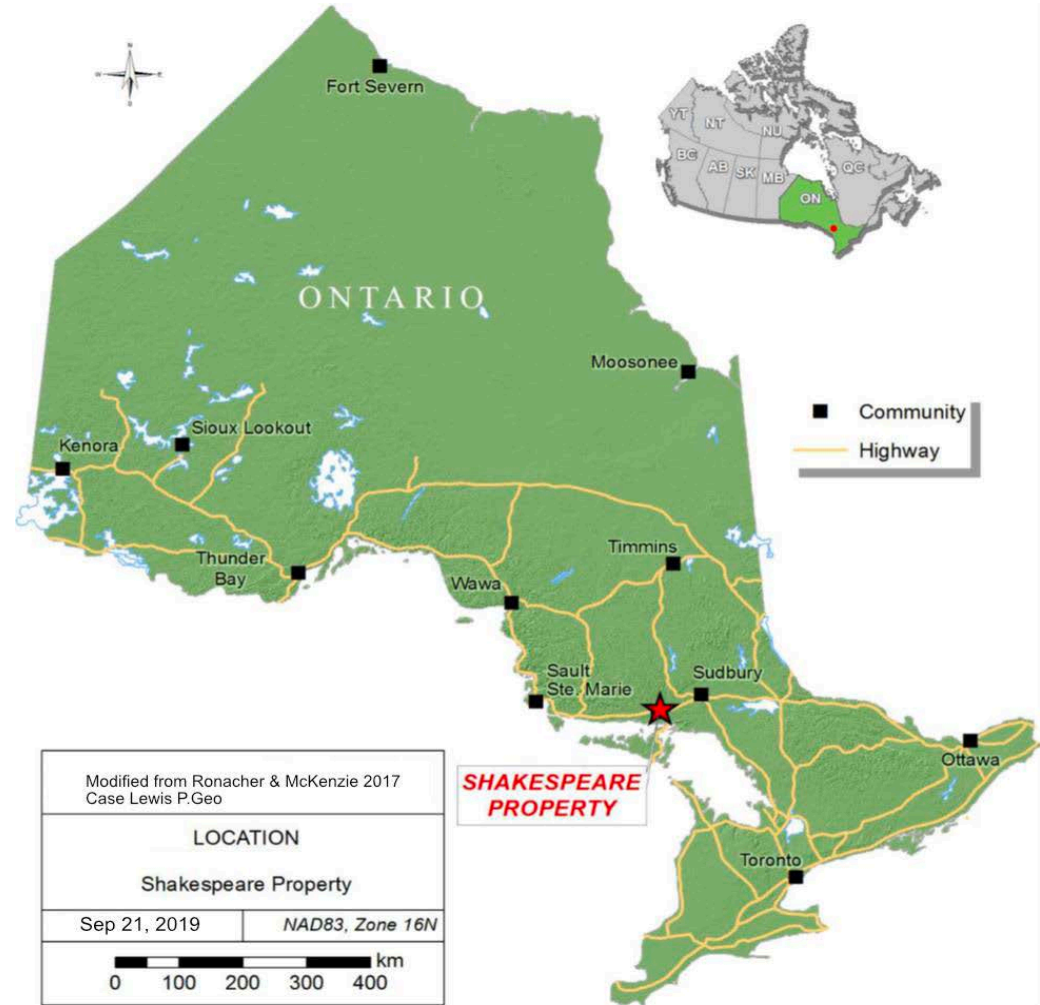
- CSE: GRAY
- FSE: GEO

# Shakespeare Project – Ontario, Canada

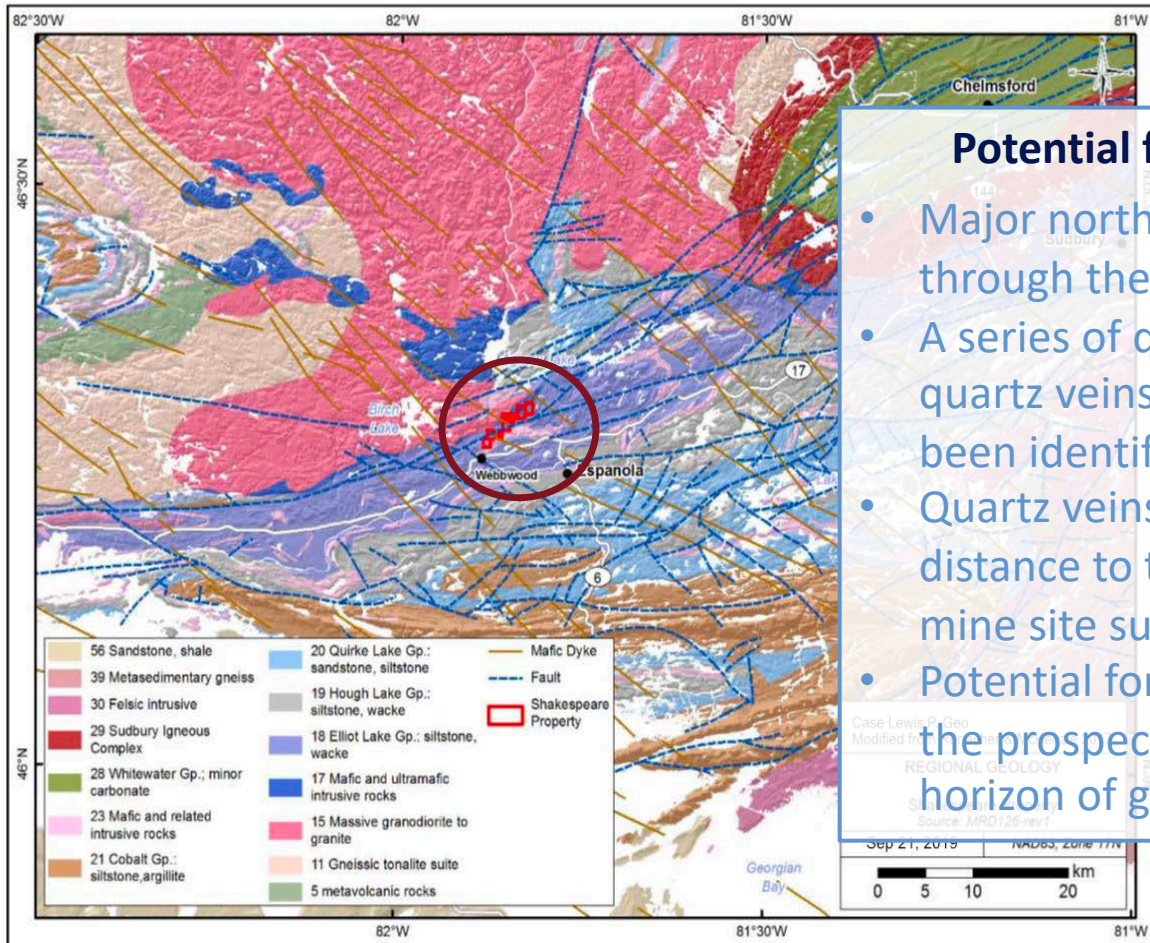


## Great Location

- Located 88 kms west of Sudbury Ontario
- Excellent Infrastructure
  - Just off the Trans-Canada Highway
  - Power right to site
  - Educated workforce
- Property consists of 24 mineral claims covering 517 ha in two contiguous blocks
  - Shakespeare Mine was in operation from 1903-1907
  - 2,959 oz of Au were produced from six underground levels
- Historic exploration included trenching, sampling and limited drilling
- Project is located in well known geology on the prolific Canadian Shield at the contact between the Archean, Southern and Superior geological provinces



# Shakespeare Project - Geology



## Potential for Significant Strike Length

- Major north east trending faults cross through the area
- A series of quartz veins and stock works of quartz veins, containing sulphides have been identified on the property
- Quartz veins identified a considerable distance to the northeast of the former mine site suggesting a regional structure
- Potential for other gold discoveries along the prospective Shakespeare gold bearing horizon of greater than 9 kms

# Shakespeare Project - Historical



## Property potential yet to be Fully Realized

The Shakespeare mine operated from 1903 to 1907 and produced 2,959 oz of gold, when gold was US\$19 per oz

There was been limited historical exploration and drilling carried out until 2014, when a new strategy was developed and partially tested. The results included:

- C-14-01: 2.0 g/t Au over 3 m, incl. 4.9 g/t Au over 1 m
- C-14-02: 15.3 g/t Au over 4 m, incl. 48.8 g/t Au over 1 m

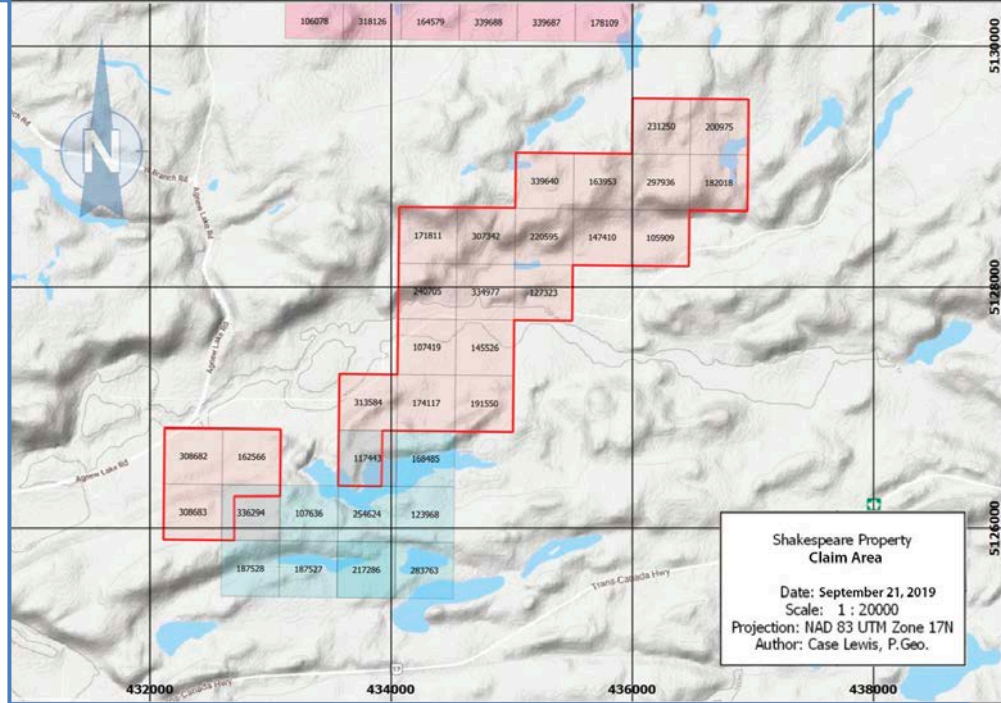
Our team has reviewed all historical reports available and we plan to initiate our exploration and drilling program in Q3 2020.

# Shakespeare Project – 2020 Exploration Plan



## Phase one: Q2 2020

- Data Compilation
  - Analysis of 2014 and 2017 drilling program
  - study of 2012 magnetic and IP surveys
  - 3D modelling of current and historical data
- Identify priority drilling targets



## Phase two: Q3 2020

- Diamond drilling
  - 1,000 metres
  - Focus: testing area around the mine shaft to confirm system of veins and high priority targets along strike

# Management and Board



## James Macintosh – President & Director

- Over 34 years of experience in mineral exploration, mining research analysis, corporate finance and management of private and public resources companies
- Current President, CEO and Director of Monterey Minerals Inc.
- Lead Director of Carlisle Goldfields prior to sale to Alamos Gold and Seed Investor and Director of CircuitMeter Inc.
- B.Sc. (Geology) and Member of Queen's University Geology Council

## Julio DiGirolamo, CPA, CA CFO & Director

- Chartered Professional Accountant with over 24 years of senior-level public company experience, 14 years of it in the mining sector
- Current CFO and Director of Monterey Minerals Inc.
- Key areas of experience include corporate governance and regulatory matters
- CFO of Carlisle Goldfields prior to sale to Alamos Gold

# Management and Board



## Kyler Hardy, Director and Non-Executive Chairman

- Over 15 years of global resource experience in exploration, operations, advisory, venture capital and private equity capacities
- A dynamic knowledge base generated from hands-on field experience, entrepreneurship and corporate management roles
- Founder or significant contributor to numerous companies including Cronin Investments, Equitas Resources, and UTM Exploration

## David Lees, Director

- Managing Director of Peninsula Investments (WA) Pty Ltd from 2007 to present.
- Managing Director of Casey Lees International Pty Ltd from 2017 to present.
- Non-Executive Director of Sultan Resources Ltd from March 2019 to present.

## Technical Advisory Board

**Bruce Durham:** credited with the discovery of several significant economic mineral deposits including: the David Bell Mine (Hemlo), the Golden Giant Mine (Hemlo), the Redstone Nickel Mine (Timmins) and the Bell Creek Mine (Timmins)

**Don McKinnon Jr.:** very experienced prospector specializing in Ontario, who been involved in managing all aspects of exploration from property acquisition and grass roots exploration, to seeing projects through to development.





# Capital Structure



**GRAY**  
Trading on the CSE  
*Trading on FSE: GEO*

**15.36 M**  
Shares

**Nil**  
Warrants

**0.80 M**  
Options

**16.16 M**  
Fully Diluted

**>60%**  
Management and Strategic  
Investors Ownership



For More Information  
[investors@graycliffexploration.com](mailto:investors@graycliffexploration.com)

